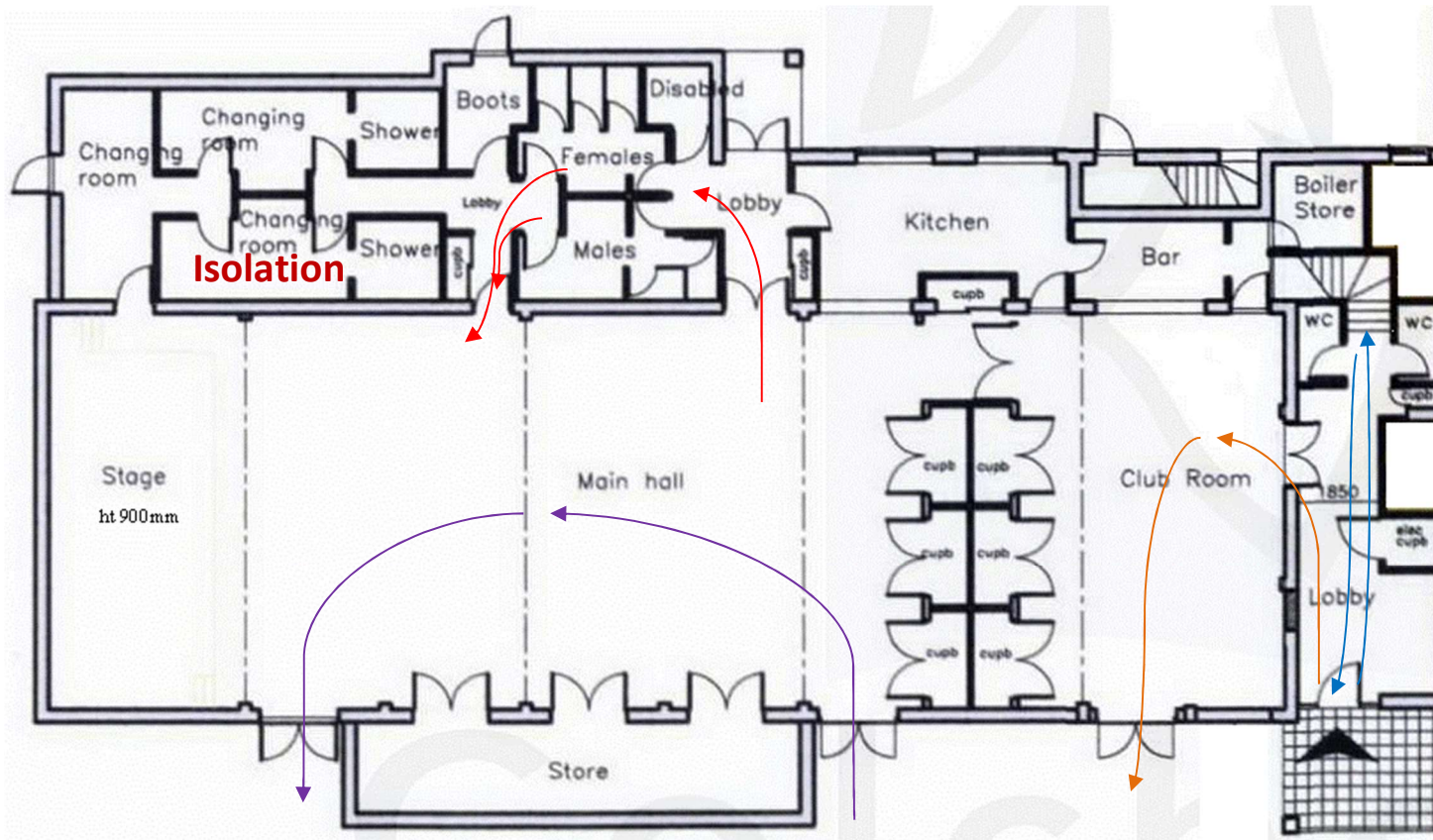


Keep the Langham Community Centre COVID-19 secure

- 1. You must not enter if you or anyone in your household has COVID-19 symptoms.**
- 2. If you develop COVID-19 symptoms within 10 days of visiting these premises you must seek a Covid-19 test.**
- 3. Maintain 2 metre social distancing as far as possible:** Wait behind marked lines as you go through the entrance hall to your activity and observe the one-way system marked and on the diagrams around the building.
- 4. Use the hand sanitiser provided** on entering the premises. Clean your hands often. Soap and paper towels are provided.
- 5. Avoid touching your face, nose, or eyes.** Clean your hands if you do.
- 6. Face coverings MUST be worn** unless an exemption applies to a person (e.g. for health reasons, those aged under 11) or a person has a reasonable excuse not to wear a face covering (eg when taking part in an activity to which an exemption applies). This is a legal requirement.
- 7. “Catch it, Bin it, Kill it”.** Tissues should be disposed of into one of the rubbish bags provided. Then wash your hands.
- 8. Check the organisers of your activity have cleaned door handles, tables, other equipment, sinks and surfaces before you arrived.** Keep them clean. We cannot clean all surfaces at the hall between each hire but the hall is cleaned once a day.
- 9. Take turns to use confined spaces such as corridors, kitchen and toilet areas.** Standing or sitting next to someone is lower risk than opposite them. Briefly passing another person in a confined space is low risk.
- 10. Keep the hall well ventilated. Close doors and kitchen windows on leaving.**

Velux windows automatically open throughout the day and close in the late evening or when raining.



Committee room

Hirers of the upstairs Committee room to remember to social distance at the stairs and to use the toilets at the foot of the stairs.

Entry and exit through main foyer.

Club room

Hirers of the Club room to use the toilets at the foot of the stairs if the hall is hired and to remember to social distance. If the hall is not hired, the main toilets may be used.

If the hall is hired, use the bar area for refreshments (max 2). Access to the disabled toilet is through the hall. Please liaise with hall hirers for access.

Entry through main foyer; exit through fire doors.

Main hall

Hirers of the main hall to use the main toilets and to remember to social distance (max 2 in Gents or Ladies).

Use the kitchen for refreshments (max 2). Entry through main foyer if no Club room hirer, or hall fire door. Exit through stage fire door. Last person to alarm and lock LCC, leaving through main foyer.

Main toilets

One-way system through the toilets. Leave through the door to the changing rooms being careful to social distance. Turn left to the hall.

Isolation room

The hall-side changing room to be used if someone becomes ill.